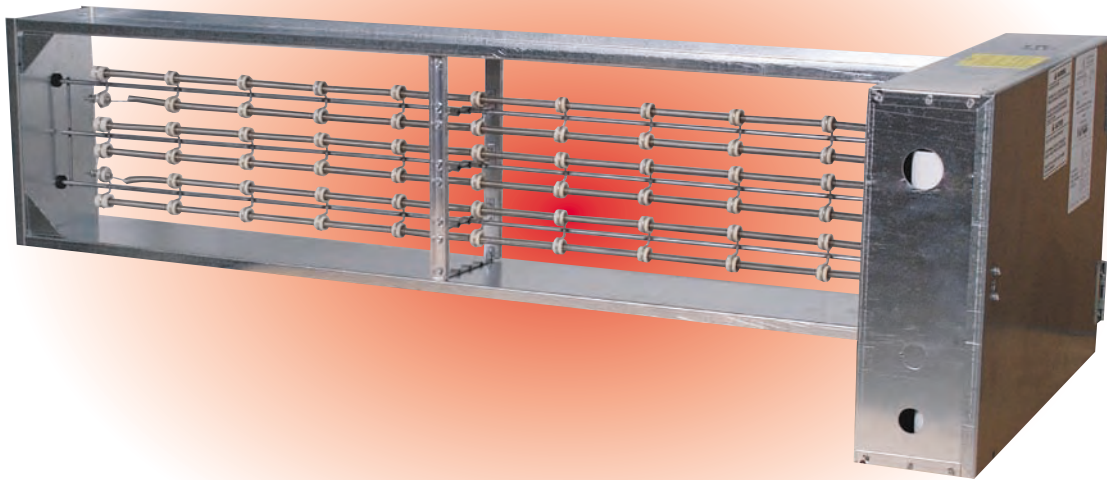
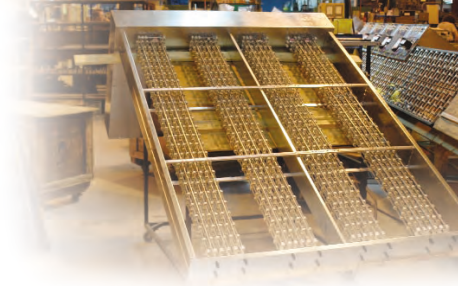


DHD & DD SERIES



BASIC HEATER INCLUDES

- 50 or 60 HZ design
- High voltage and low voltage terminal boards to interconnect heater with remote panel
- Grounding lugs
- Automatic limit switch for primary over temperature protection
- Manual reset limit switch for secondary over temperature protection
- Left hand offset control box

OPTIONS

- Standard supply voltages, 120 - 600
- Standard control voltages, 24 - 277
- Single or three phase
- Staging (balanced, unless otherwise specified)
- Slip in, flange mount, bottom mount
- Full face coverage
- Recessed control box
- Right hand offset control box
- 80/20 (Ni/Cr) resistance wire
- Stainless steel wire
- Derated coils
- Vapor barrier
- Gasketed cover

ACCESSORIES

- Air flow switch

DESIGN LIMITATIONS - DHD & DD

Multiple stage heaters do not always provide full face coverage. For multizone or full face coverage requirements notify factory.

1. Maximum 1500 KW
2. Maximum 10' x 12'
3. Minimum 8" x 6" three phase only - minimum height 8"
4. Recess box only - minimum width 8"

These limitations are general guidelines. Other limitations may be encountered due to KW, volts, phase, stage, and size relationship.